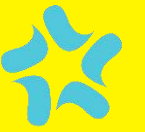




TUI MAGIC LIFE

TUI MAGIC LIFE SARIGERME

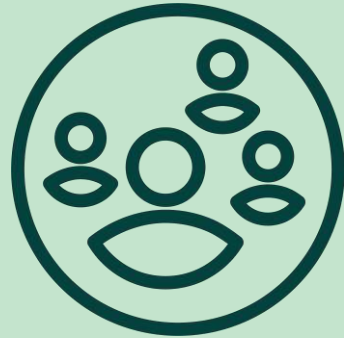
Sustainability Report 2025



PROGRESS

Together with our partners, we will co-create the next-generation sustainable business model for the tourism industry.

We will enable our customers to make sustainable holiday choices at every stage of the customer journey.



PEOPLE

We will ensure that local people and communities benefit from tourism and the local supply chain.

We will empower a generation of changemakers by helping them acquire the new skills and knowledge they need to transform the tourism industry.



PLANET

We will achieve net-zero emissions across our operations and supply chain by 2050 at the latest.

To protect our planet we will change the way we use resources, and become a circular business.



Agenda of Progress



TUI MAGIC LIFE

- 1 Club Introduction
- 2 Awards & Certificates
- 3 Sustainability Activities
- 4 Social Responsibility Projects
- 5 Wildlife Protection
- 6 Sustainable Foods



Agenda of Progress

Club Introduction

WELCOME TO TUI MAGIC LIFE SARIGERME

Welcoming its guests at the seafront in Sarigerme that generously displays all natural beauties of Mugla, TUI MAGIC LIFE Sarigerme has been providing service since 1990. Renovated in the 2019-2020 season, the property is situated on an area of 153.000 m². Featuring 253 elegant rooms, the property has a capacity of 506 beds. The property provides service in the 5-star hotel category.



TUI MAGIC LIFE

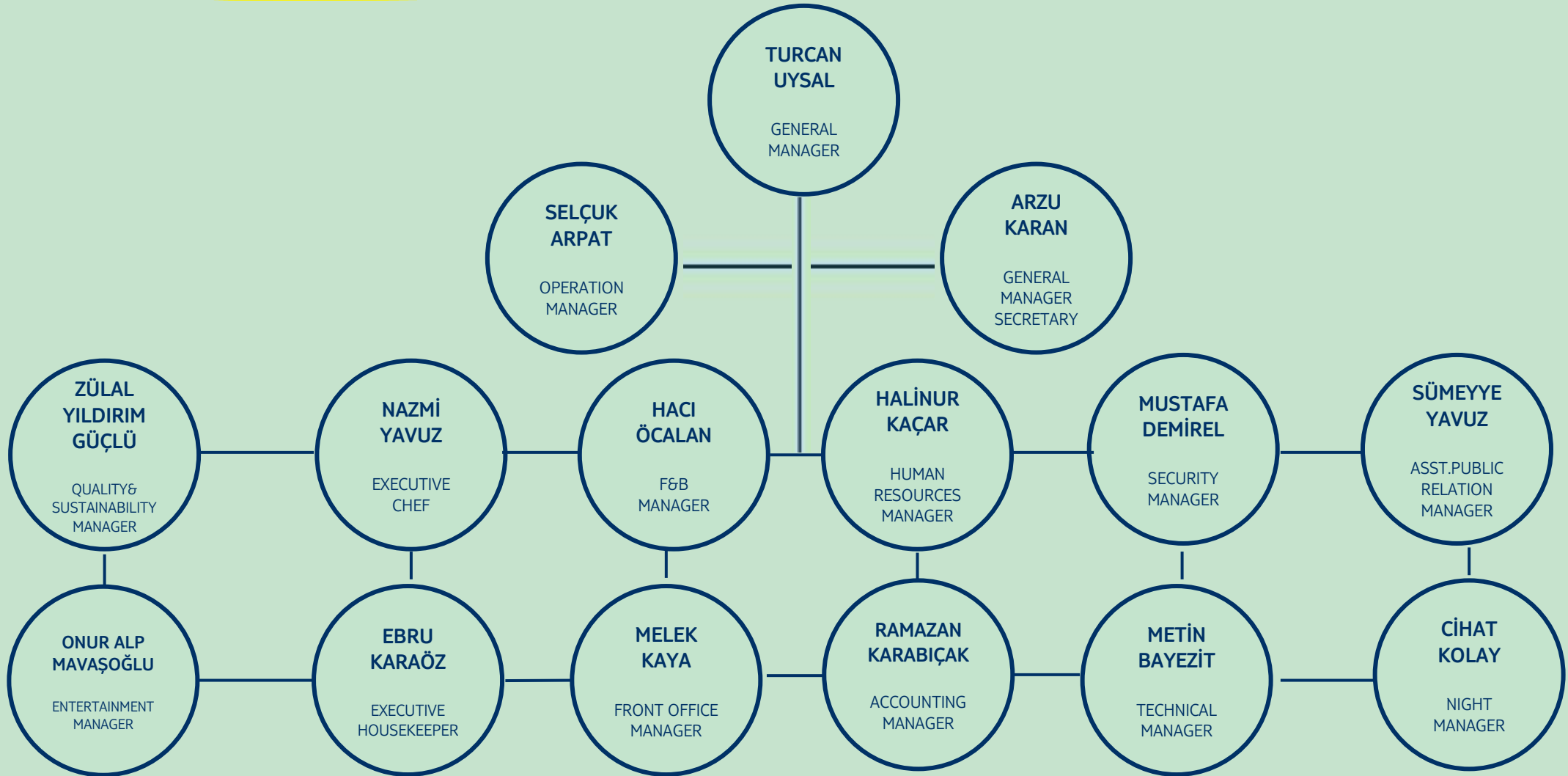


Agenda of Progress



TUI MAGIC LIFE

Sustainability Team



Agenda of Progress

Awards & Certificates



TUI MAGIC LIFE



HolidayCheck

GOLD AWARD 2025

One of the most popular hotels in the world for at least the 5th time in a row.
Eines der beliebtesten Hotels weltweit - mindestens zum 5. Mal in Folge.


Christoph Ludmann
CEO



Agenda of Progress

Awards & Certificates



TUI MAGIC LIFE

Awarded to
TUI MAGIC LIFE
Sarigerme

Booking.com

Traveller Review Awards 2025

8,8

out of 10



*Pure water, clean coasts,
safety and access for all...*



TUI MAGIC LIFE Sarigerme



GSTC Certification Code: GSTC:TRAVELMUS

Sustainable Tourism CERTIFICATION

This certification recommended by Türkiye Tourism Promotion and Development Agency is issued by Bureau Veritas Certification Hong Kong Limited.

Bureau Veritas Certification Hong Kong Limited is accredited by GSTC and its accreditation coverage is published at www.gstc.org.

RA TT HOTELS SARIGERME

SARIGERME KÖYÜ NO: 434 OYTAÇI, MUĞLA, TÜRKİYE

Based on an audit according to the requirements stated in the Türkiye Sustainable Tourism Standard, Version 1.0, 19 May 2022, which is recognized by GSTC and a signed contract, Bureau Veritas Certification Hong Kong Limited herewith certifies that the facility listed above is found to be in compliance with Türkiye Sustainable Tourism Standard, Version 1.0 19 May 2022. This guarantees that the criteria for managing Sustainable Tourism certified tourism services have been met.

Certification Number	BVG-ST-19-00339
Date of First Certification	13 / 12 / 2022
Issued On	17 / 12 / 2023
Date of Expiry	11 / 12 / 2025

Signature

BARANIM TAGAY
Certification Manager

Facility Type
Accommodation Facility



*The Sustainable Tourism Program was developed under the leadership of the Republic of Turkey Ministry of Culture and Tourism.

Agenda of Progress

Sustainability Activities

182

Total social responsibility & environmental activities in 2025 (hour)

28

Total number of environmental activities in 2025



Agenda of Progress

Sustainability Activities

*In order to increase our awareness of the environment, we regularly carry out environmental cleaning with our staff in nearby areas.

*We regularly carry out environmental activities with our staff every year on "World Environment Day" and "World Clean Up Day" and in 2025, we cleaned an area close to the hotel area together with our staff.

*We donate to TEMA for planting saplings every year.

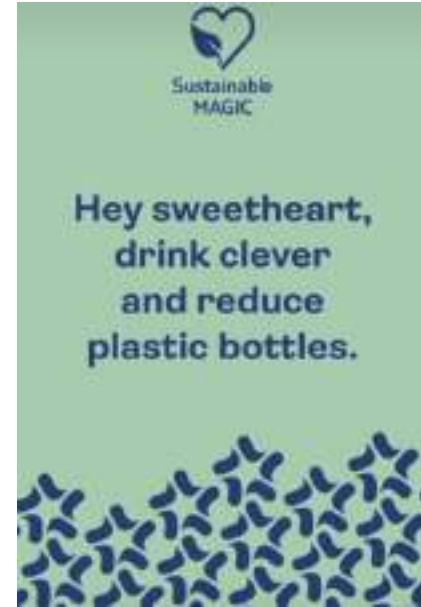
*Sea water analyses are carried out for Blue Flag standards at our beach every year between May and September. The seawater analysis results, and beach facilities of our beach comply with Blue Flag standards.

*We installed water dispensers in the property. So, we have decreased 345.000 pieces plastic water bottles.

*We have joined to National Forestation Day and planted a few saplings.



TUI MAGIC LIFE



Agenda of Progress

Wildlife Protection

- There are cat houses and food stations for the cats in the facility and we carry out sterilisation operations.
- When Caretta Caretta turtles lay eggs on our beach, we take them under our protection with special cages and we cooperate with DEKAMER (Sea Turtle Research, Rescue and Rehabilitation Centre).
- In our facility, we increase awareness by placing cat, squirrel and turtle exit signs for areas where vehicles pass.



TUI MAGIC LIFE



Agenda of Progress

Wildlife Protection

- In order to protect the biodiversity in our facility and our region and to contribute to its development, we protect all living things such as plants and animals in our facility, they form the ecosystems for the areas they live in.
- The sand lily, which is an endemic species in our facility, is also protected.
- In addition, animal shelters in our region are assisted by donating equipment and materials that we do not use in our facility.
- The marshmallow flower seeds left in the guest rooms are given as a gift for guests to sow in their own environment.



Agenda of Progress



TUI MAGIC LIFE

Sustainable Foods



Thyme & Rosmarin

Our rosmarins, carefully harvested by our gardeners from our spice garden, is handed used in our kitchen. Combined with the skillful hands of our chefs, delicious flavors emerge.



Coffee Grounds

We collect the coffee grounds that comes from each coffee we serve you. We use it as a fertilizer source for our plants. We give back to nature what we take from nature.



Compost Fertilizer

Our organic kitchen waste together with garden waste is composted. After the composting process, the fertilizers taken from the compost bins are used by our garden team for the trees in the garden.



Agenda of People



TUI MAGIC LIFE

- 1 Staff Facilities
- 2 Local Area Introduction
- 3 Local Culture Introduction
- 4 Local Suply Chain



Agenda of People

Staff Facilities

- We provide many opportunities and privileges to our staff in our facility. All our employees are informed of all their legal rights along with on-the-job information. We offer our staff not only uniforms but also clothes suitable for the work they do. For example, personal protective clothing for technical service personnel, non-slip and orthopedic clogs for kitchen staff.
- Staff housing is offered for our staff who do not reside in the immediate area.
- Breakfast, lunch, dinner and/or night meal are offered to all our staff, depending on the shift they work.
- As a hotel, discounted health services are provided to all our employees through the hospital we have a contract with.
- We offer discounts for staff to stay in our hotels.



TUI MAGIC LIFE



Agenda of People

Staff Facilities

- We offer activities and general areas for our employees such as staff entertainment parties, a staff beach, and a barbecue day.
- Our staff who are selected as staff of the month and staff of the year are rewarded with a special gift.
- Each of our staff's birthdays are celebrated with special gifts, sweets and celebration cards.
- Our facility was awarded the "Great Place to Work" certificate through a survey in which our staff could participate anonymously and freely.
- Special days for our staff (such as Mother's Day, Father's Day, World Woman's Day) are celebrated in our facility with gifts.
- Our staff are given Ramadan boxes during Ramadan and holiday chocolates during holidays.
- We contribute to vocational schools and vocational high schools with our intern policy to support their vocational training and employ a certain number of interns.



TUI MAGIC LIFE



Agenda of People

Staff Education

- As a facility, we attach great importance to training and staff development. Staff trainings are very important and extremely valuable for us in this sense.
- In addition to general and department-based vocational and occupational health and safety trainings, we also provide sustainability trainings to our personnel.
- In addition to the emergency trainings we have given to our personnel, we also increase the awareness and consciousness of the personnel by organising drills according to the type of emergency.
- Lastly, our colleagues come to the hotel for join dinner and evening prgoramm when they are birdthday.



TUI MAGIC LIFE

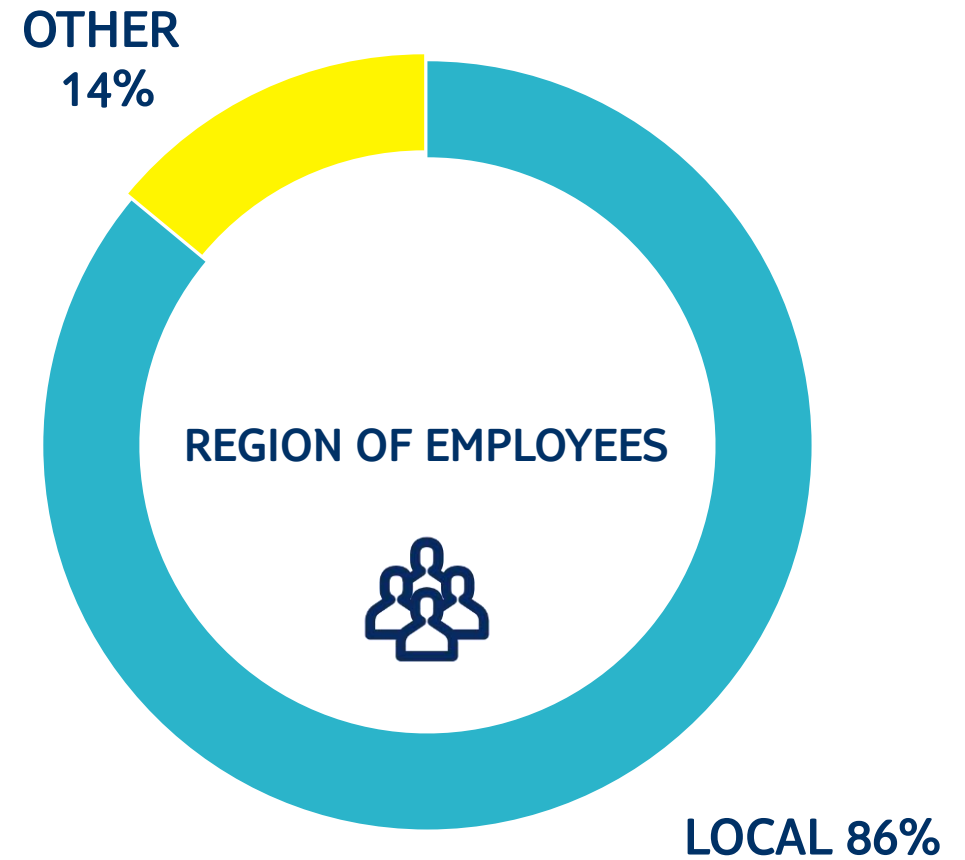
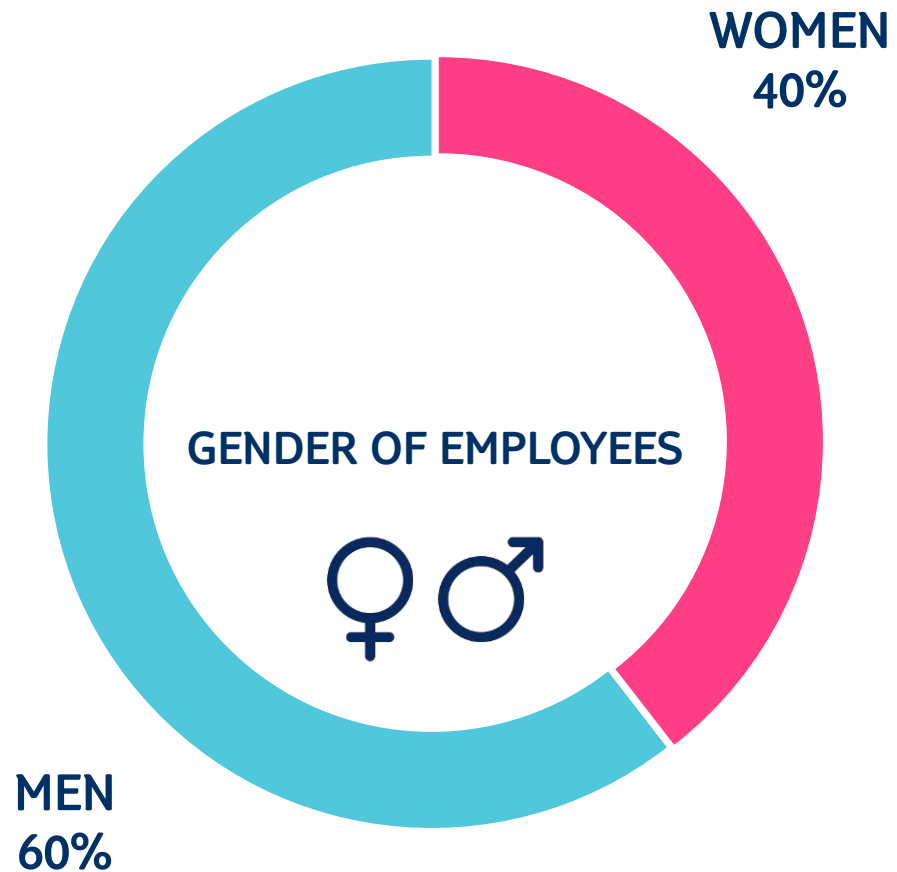


Agenda of People



TUI MAGIC LIFE

Contribution to Staff



Agenda of People

Local Area Introduction



TUI MAGIC LIFE



Guests are introduced to the local area via TUI MAGIC LIFE App and our Instagram account, and there is information about the promotion of the region in the staff areas. In the "Discovery" section of the TUI MAGIC LIFE App, it is possible to find information about places of interest and Turkish culture in the region.



Agenda of People

Local Culture Introduction

- We introduce our food culture by serving local dishes in our main restaurant. We show the local dishes with the "Regional" symbol on the food labels.
- We put the information in the rooms about our traditional days (Hidirellez, Aşure day, etc).
- Every Sunday is Turkish Day and we organise local foods and bazaar.



Agenda of People

Local Culture Introduction

- You can also see the local items and objects in the hotel area that includes tea boilers, pictures on the wall, traditional copper saucepans and pans for example.
- We also provide information about local culture through the TUI MAGIC LIFE App.
- As a centre, we make cultural donations and support projects and foundations to protect cultural heritage.



Agenda of People

Local Supply Chain

- We have a Sustainable Purchasing Guideline for all possible products or services, local companies that meet international standards have priority over international companies. Imported products are only supplied if there are no local alternatives or if the local alternatives are not of the expected quality. In addition, suppliers who are committed to contributing to the regional culture and local people are preferred.
- In our facility, products such as jam, olive oil, olives, and honey are supplied from local companies supported by the TUI Care Foundation and offered to our guests.



TUI MAGIC LIFE

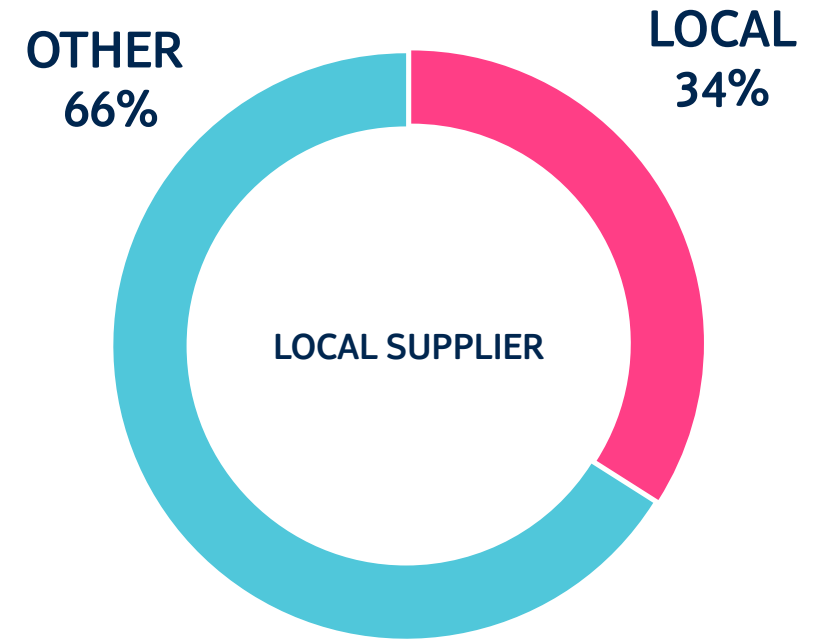
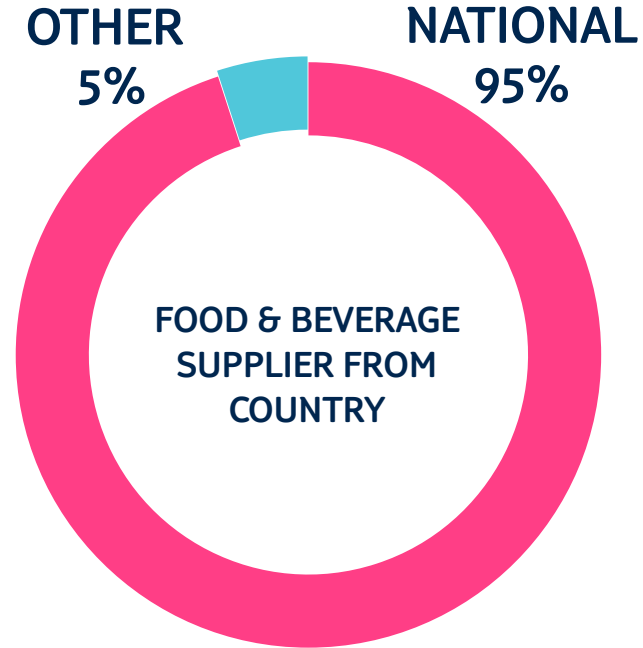
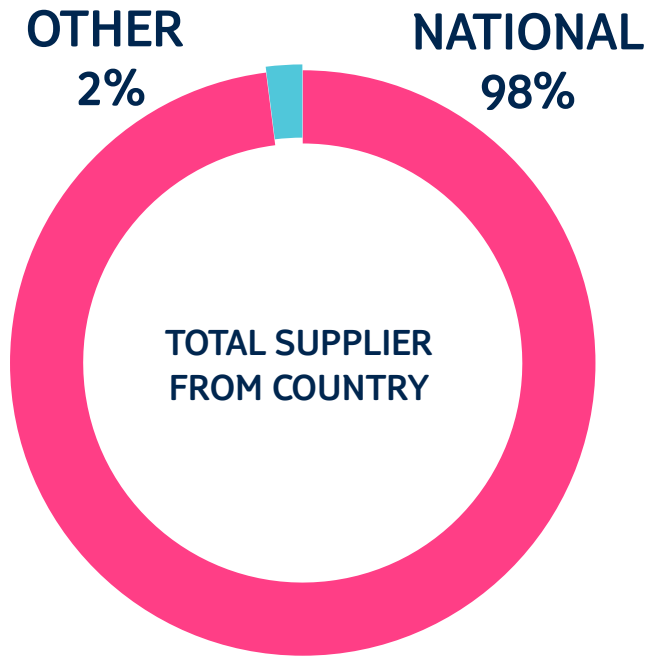


Agenda of People



TUI MAGIC LIFE

Contribution to Supplier



Agenda of Planet



TUI MAGIC LIFE

- 1 Consumption of Electric
- 2 Consumption of Water
- 3 Consumption of Chemicals
- 4 Consumption of Fossil Fuel
- 5 Consumption of Single-use Plastics
- 6 Waste Management



Consumptions



TUI MAGIC LIFE

Electric

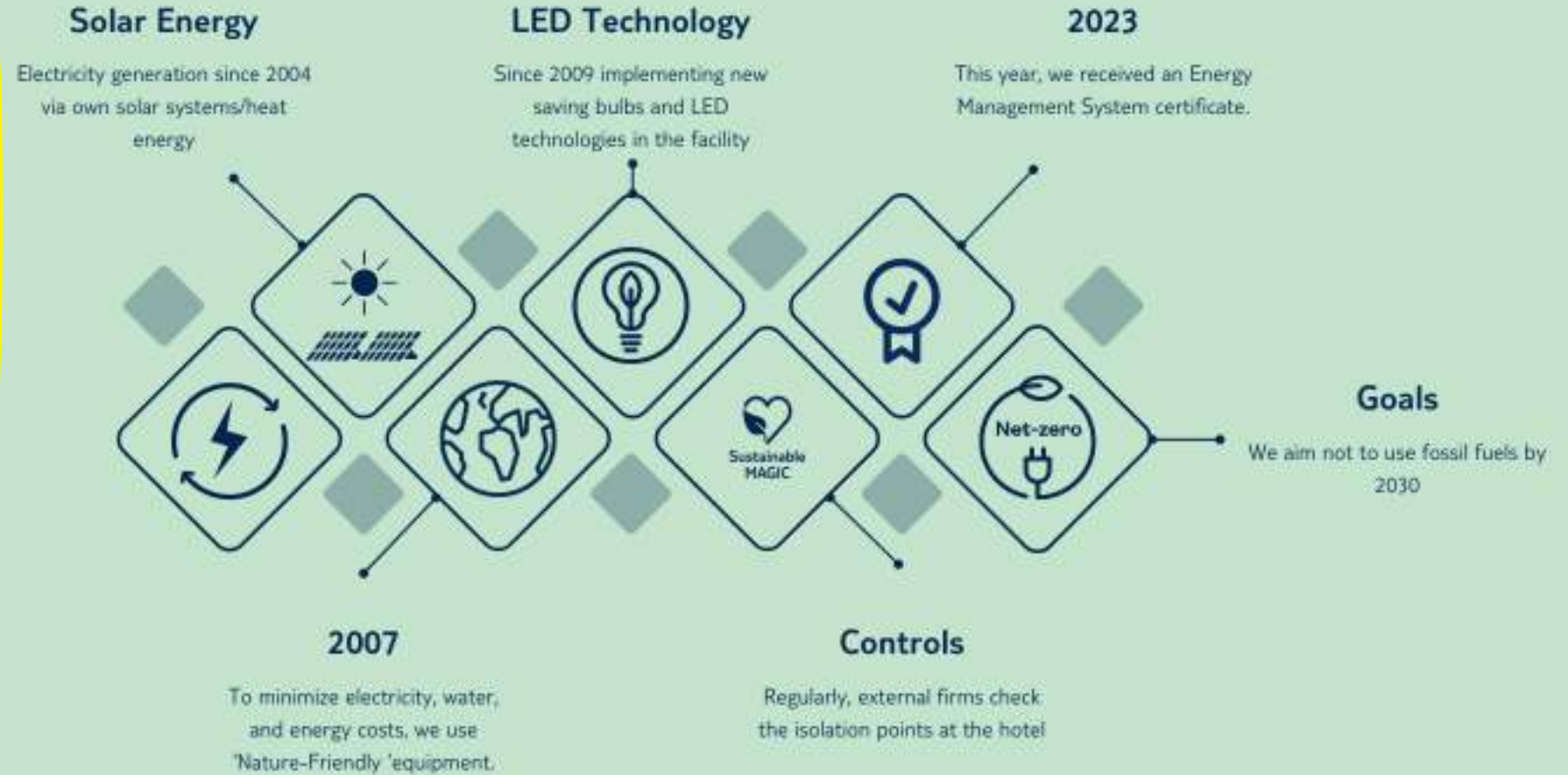
Electric Consumption 24

- ❑ Total: 2.136.435 kWh
- ❑ Per person: 19,74 kWh

Electric Consumption 25

- ❑ Total: 1.983.264 kWh
- ❑ Per person: 18,27 kWh

Our electric consumption decreased this year. This is because the air temperatures this year are colder than last year.



Consumptions

Water

Water Consumption 24

- ❑ Total: 116.422 m3
- ❑ Per person: 1,08 m3

Water Consumption 25

- ❑ Total: 100.190 m3
- ❑ Per person: 0,92 m3

In the 2025 season, our water consumption decreased. This is because the air temperatures this year are colder than last year and this october increased rainy than last october.



TUI MAGIC LIFE

No Water Leakage

Pipes are regularly checked for leakage and staff reminded in staff education for each department

Tap Aerator

There are aerators that regulate the water flow in the faucets and shower heads.

2023

We improved the garden irrigation system.



Taps with Timer

The sea and poolside showers are timed

3 Day Rule

Bed sheets are changed every 3 days if there is not a special request by the guest.

Goals

We will switch some plants to drought-resistant plants.



Consumptions



TUI MAGIC LIFE

Fossil Fuels

- ❑ LNG 24: 0,42 kg/pp
- ❑ LNG 25: 0,43 kg/pp

- ❑ Petrol 24: 0,09 l/pp
- ❑ Petrol 25: 0,08 l/pp

- ❑ Charcoal 24: 0,08 kg/pp
- ❑ Charcoal 25: 0,07 kg/pp

LPG and charcoal consumption decreased this year. Next year, we will purchase new electric grills in place of the charcoal grills, and we will not use charcoal.



Consumptions



TUI MAGIC LIFE

Chemicals

- ❑ F&B 24: 0,068 kg/pp
- ❑ F&B 25: 0,070 kg/pp

- ❑ Housekeeping 24: 0,030 kg/pp
- ❑ Housekeeping 25: 0,027 kg/pp

- ❑ Pool Chemicals 24: 0,146 kg/pp
- ❑ Pool Chemicals 25: 0,113 kg/pp

Housekeeping and pool chemicals decreased this season, and F&B chemicals were slightly increasing

Nature Friendly

We choose nature-friendly cleaning chemicals.

Dosage Units

We favour using dosage units, we use optimum cleaning chemicals

Ozone

We use ozone system for fruit and vegetables disinfection



Education

We regularly train staff about cleaning chemicals

Follow up

We follow up by checking the consumption of chemicals

For Future

We can preserve together with you about our world.



Consumptions



TUI MAGIC LIFE

Single-use plastics

- ❑ Owing to our sauce and butter machine, we get rid of 131.000 single-use plastic waste per year.
- ❑ We haven't used plastic straws and stirrers since 2019. Thus, we don't use 156.000 single-use plastic straws and stirrers.
- ❑ Last year, we changed the mineral water package to glass packing for mineral water.
- ❑ Also, other single-use packages consumption also decreases.
- ❑ We installed to water dispensers in the property. So, we have decreased 345.000 pieces plastic water bottles.

No Plastic Straw

Since 2019, we don't use plastic straws and stirrers

Reuse

We prefer reuse cups

Compostable

For six years, we have used compostable trash bags



Sauce Dispenser

We have sauce dispensers at the buffets, so we don't use single-use packets.

No Single-use Cutlery

We don't use single-use cutlery and plates.

Water Dispenser

We don't use small plastic water bottles.



Consumptions

Waste Management



TUI MAGIC LIFE

Recycle

We separate paper, plastic, metal and glass waste and give them to recycling forms.

Education

We regularly train staff about recycling waste and sustainability topics.

Reuse

Eggshells and coffee grounds are reused in the garden.



Bulk packages

We choose products in bulk packages

Compost Fertilizer

We make compost fertilizer with our vegetables and garden waste

Goals

After all of our garden waste is made into compost, we will use it as fertilizer for our garden





TUI MAGIC LIFE

Thank you.